



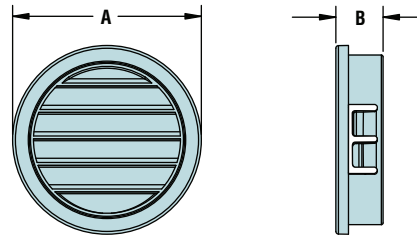
- Louvers permit the passage of air for ventilation but limit liquid infiltration.
- Suitable for ventilation in electronic enclosures, motor housings and metal or plastic panels.
- Quick and easy installation with flexible orientation of louver direction.
- Withstand a push back force of 35 lbs. (47 Nm).
- Lock firmly into panel up to .250" (6,4 mm) thick.
- Locking fingers in fractional increments up to the maximum panel thickness.
- Heyco Vent Plugs, Heyco Thick Panel Vent Plugs, and Heyco Liquid Tight Threaded Vent Plugs also available.

## Heyco® Louvered Plugs

Mounting Hole Diameter Range: .875" (22,2 mm) to 3.000" (76,2 mm)

MOUNTING HOLE DIAMETER		PART NO.	DESCRIPTION	PART DIMENSIONS			
in.	mm.			Black	A Head Diameter		B Overall Height
				in.	mm.	in.	mm.
Multiple Locking Steps for Panel Thickness up to .125" (3,2 mm)							
.875	22,2	<b>2557</b>	LP 875	1.02	25,8	.53	13,5
1.000	25,4	<b>2559</b>	LP 1000	1.21	30,6		
1.093 - 1.125	27,8 - 28,6	<b>2561</b>	LP 1093	1.22	30,9	.54	13,8
1.375	34,9	<b>2567</b>	LP 1375	1.50	38,1		
1.500	38,1	<b>2569</b>	LP 1500	1.68	42,6	.82	20,9
2.000	50,8	<b>2594</b>	LP 2000	2.17	55,1		
Multiple Locking Steps for Panel Thickness up to .250" (6,4 mm)							
2.500	63,5	<b>2596</b>	LP 2.5	2.72	69,0	.82	20,9
3.000	76,2	<b>2598</b>	LP 3.0	3.17	80,5		

Standard color black. Consult Heyco for other colors.



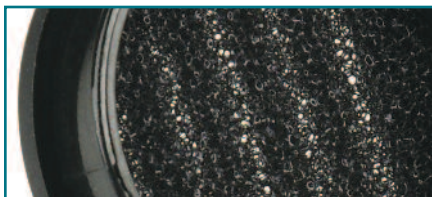
- Located behind the louvers, filter inserts permit the passage of air for ventilation but limit liquid as well as dust and pest infiltration.
- Polyurethane foam filter will filter particle sizes 30 micron and larger.

## HEYClean™ Filter Insert Louvered Plugs

Mounting Hole Diameter Range: .875" (22,2 mm) to 3.000" (76,2 mm)

MOUNTING HOLE DIAMETER		PART NO.	DESCRIPTION	PART DIMENSIONS			
in.	mm.			Black	A Head Diameter		B Overall Height
				in.	mm.	in.	mm.
Multiple Locking Steps for Panel Thickness up to .125" (3,2 mm)							
.875	22,2	<b>4947</b>	FILP 875	1.02	25,8	.53	13,5
1.000	25,4	<b>4949</b>	FILP 1000	1.21	30,6		
1.093 - 1.125	27,8 - 28,6	<b>4951</b>	FILP 1093	1.22	30,9	.54	13,8
1.375	34,9	<b>4957</b>	FILP 1375	1.50	38,1		
1.500	38,1	<b>4959</b>	FILP 1500	1.68	42,6	.82	20,9
2.000	50,8	<b>4963</b>	FILP 2000	2.17	55,1		
Multiple Locking Steps for Panel Thickness up to .250" (6,4 mm)							
2.500	63,5	<b>4965</b>	FILP 2.5	2.72	69,0	.82	20,9
3.000	76,2	<b>4967</b>	FILP 3.0	3.17	80,5		

Standard color black. Consult Heyco for other colors.



Material	Nylon 6/6
Flammability Rating	94V-2
Temperature Range	-40°F (-40°C) to 221°F (105°C)